

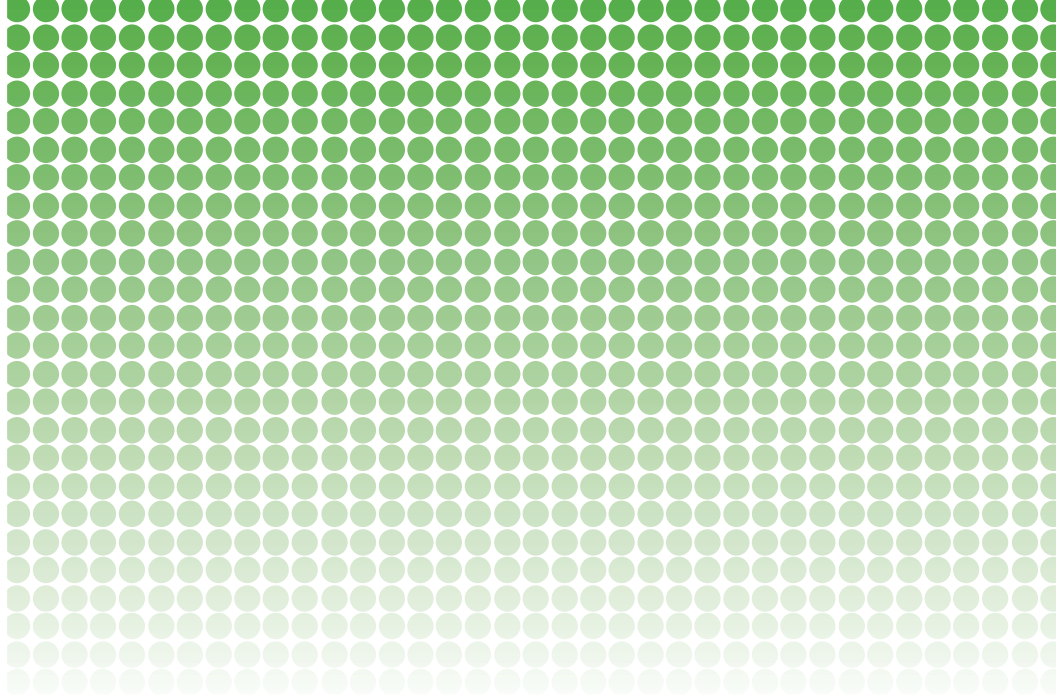
OPERATOR'S MANUAL

 **PeelPlate[®] YM**
YEAST AND MOLD



WEBER SCIENTIFIC

FOR DETECTION AND ENUMERATION OF YEAST AND MOLD



Contents

Kit Information	4
Introduction	4
Kit Contents, Storage, and Testing Conditions	4
Principle	5
Applicability	5
Precautions:	5
<hr/>	
Sample Preparation	6
<hr/>	
Peel Plate YM Test Procedure	7
<hr/>	
Interpretation of results	9
<hr/>	
Quality Control	9
<hr/>	
Disposal	10
<hr/>	
Technical Support	10
<hr/>	
Order Information	10
<hr/>	
Warranty	11

Kit Information

Introduction

Peel Plate® YM (Yeast and Mold) tests detect and enumerate yeast and mold micro-organisms. The method is applicable for determination of fungi in samples when incubated at 25 ± 3 °C in the dark. Sample or sample dilution is added to plate and is incubated for 3 to 5 days. Yeast and mold colonies will appear as green, blue, to dark brown round or filamentous shape. Molds may also produce natural pigments. Peel Plate YM tests are intended for microbiological laboratories, but may also be used by food quality stakeholders such as farmers, milk processors, and water municipalities. The method limit of detection is 1 or greater colony forming units per milliliter or gram (CFU/mL or g) of test sample. The accurate quantitative range for yeast and mold is 10 to 150 CFU/test (counts outside this range are considered estimates). If substantial amounts of mold are present, depending on the type of mold, the upper countable limit may have to be lowered at the discretion of the analyst.

Kit Contents, Storage, and Testing Conditions

A test kit (item code PP-YM-100K) contains 100 tests, 50 each in two desiccated foil bags containing a blue indicator desiccant. **Store kits in foil bag refrigerated*** or at controlled room temperature (0 to 25°C), until expiration date.

Kits are not required to be shipped refrigerated.

Open bag and remove number of plates needed for analysis. Perform testing in a clean dry testing area at ambient temperature. **Tests held at room temperature for 1 hour or more will open more easily.** Reseal the bag using the zip closure to store unused tests. Moisture or heat or storage abused test will discolor yellow. Do not use discolored tests or tests from bags with pink/white desiccant indicator.

* **Refrigeration is defined as 0 to 7 °C or 0 to 4.5 °C and is required for US Certified Labs.**

Principle

The Peel Plate YM test is based on potato dextrose medium to support and colorimetrically identify the growth of yeast and mold at 25 ± 3 °C in the dark. The Peel Plate YM test contains the enzyme substrates that turn blue when detecting phosphatase and glucosidase enzymes that are produced by growing fungi. Peel Plate YM tests also contain gelling and wicking agents which absorb and diffuse the sample.

Applicability

The Peel Plate YM method has been certified by the AOAC Research Institute as Performance Tested Method 061601. This test kit's performance was reviewed by AOAC-RI and was found to perform to the manufacturer's specifications. The Peel Plate YM test has been validated at 25 °C \pm 3 °C for 3 to 5 days in 2 % milk, cottage cheese, sour cream, yogurt, vanilla ice cream mix, mixed fruit, sliced apples, orange juice, grape juice, corn flour, flour tortillas, salad dressing, hummus, breaded fish sticks, and sponge rinse samples from stainless steel surfaces and found to not be significantly different from the dichloran rose bengal chloramphenicol agar (DRBC) reference method. Samples should be 10-fold serially diluted into the countable range of 1 to 150 CFU/mL. Counts less than 10/plate are considered estimated counts.

Precautions:

- Observe Good Laboratory Practices for microbial testing. Avoid specimen contamination.
- Perform tests with clean washed and gloved hands assuming potential pathogenic bacteria.
- Test on a level surface in a clean area, free of dust and blowing air.
- Avoid hand contact with test samples and Peel Plate YM medium.
- After plating, replace adhesive cover so it lays flat with no wrinkles to avoid drying out the rehydrated medium during incubation.

Sample Preparation

Liquid Dairy	<ul style="list-style-type: none"> • White milk dairy samples (raw milk and pasteurized whole, lower fat %, and skim) may be tested directly or serially diluted to a range (1 to 150 CFU/mL). <ul style="list-style-type: none"> ‣ To serially dilute, add 25 mL into 225 mL 0.1 % peptone water or microbiologically suitable dilution buffer. Other automated dilution pipets and dilution schemes are acceptable.
Solid Dairy	<ul style="list-style-type: none"> • Add 25 g of solid dairy (ice cream, sour cream, heavy cream, etc.) to 225 mL of 0.1 % peptone water or microbiologically suitable dilution buffer to reach a range (1 to 150 CFU/mL). • For milk powders and evaporated/condensed, reconstitute with water to normal milk solid content and let any undissolved solids settle. Test liquid fraction as Liquid Dairy.
Bakery	<ul style="list-style-type: none"> • Add 25 g of flour, or baked products to 225 mL of 0.1 % peptone water or microbiologically suitable dilution buffer, homogenize for 2 minutes, and let settle to extract sample. • Continue to dilute 10 mL of prior dilution in 90 mL of dilution blank to reach a range (1 to 150 CFU/mL).
Fruit Juices	<ul style="list-style-type: none"> • Add 1 mL of juice directly. Raw citrus juice may require pH adjustment, clear or filtered juices and dilutions of citrus should not require a pH adjustment. • Continue to dilute 10 mL of prior dilution in 90 mL of 0.1 % peptone or dilution buffer to reach a range per plate (1 to 150 CFU/mL).
Environmental Swab	<ul style="list-style-type: none"> • Refer to Peel Plate Sample Preparation Addendum.

Peel Plate YM Test Procedure



Step 1

- For ease of opening, use plates at room temperature.
- Label plate on clear side using marker or bar code strip. Do not mark or label the uplifted 47 mm circular area.



Step 2

- Invert and apply pressure with fingers to the back platform as shown and lift tab.
- Pull the adhesive cover completely exposing the culture disc. Leave cover adhered to back of plate.
- For best results, hold plates at room temperature prior to plating.



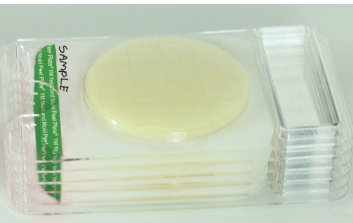
Step 3

- While holding cover up, and keeping plate flat on surface, **vertically dispense 1.0 mL of sample or sample dilution to the center of disc**. Expel within 2 to 3 seconds 1-2 cm above surface.



Step 4

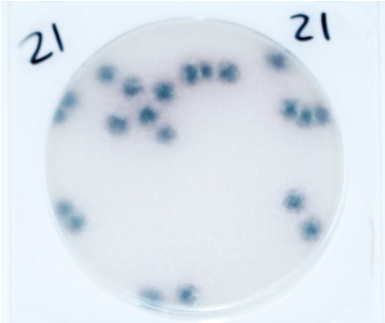
- Sample will diffuse to the edges of the disc.
- Re-apply the adhesive cover without wrinkling. Press around edges of plate to ensure proper seal.



Step 5

- Incubate plates with clear side up, as shown.
- Incubate at room temperature or at a controlled temperature, 25 ± 3 °C for 3 to 5 days
- Plates can stack by aligning the feet and rectangle platform. Stacking up to 20 plates will not affect plate heat transfer.

Analysis of Peel Plate YM Results



- At the end of incubation period, observe plates for colonies through the clear side of the Peel Plate YM test. Each blue or blue/grey/green/brown spot represents one CFU. The sum of spots is reported as the total yeast and mold CFU/mL of the diluted sample.
- Multiply CFU/mL by dilution to calculate CFU/(mL or g) of original sample.
- In case of spreading fungi, score one CFU for each defined spot. Blended or spreading colonies are scored as a single CFU.
- Counts of 10 to 150 CFU/plate are considered countable, while counts outside that range are considered estimates.

Interpretation of results

- Peel Plate YM tests have been evaluated in the claimed foods with 0.1% peptone water, but have not been evaluated with all possible food products, food processes, testing protocols or with all possible microorganism strains.

Quality Control

Quality control should be performed according to Good Laboratory Practices, and with the frequency determined by laboratory standard operating procedures. Common practices call for a Dilution Control, Negative Control, and Positive Control.

- **Dilution Control:** Test 1.0 mL of sterile dilution buffer to verify no detectable yeast or mold after incubation.
- **Negative Control:** Prepare Negative Control by autoclaving the appropriate dilution of test sample at 121 °C for 15 minutes. Cool to 4 °C and test 1.0 mL. Verify no detectable yeast or mold in the Negative Control.
- **Positive Control:** Spike a sample with known yeast or mold culture or a combination. Dilute sample to a range of 1 to 150 CFU/mL and test 1.0 mL to verify detection after incubation.

Disposal

Microbiological cultures and reagents should be collected into biohazard bags and autoclaved. Dispose according to local, state, and federal regulations.

Technical Support

For questions contact a local representative or Charm Sciences at **+1.978.687.9200** or **support@charm.com**.

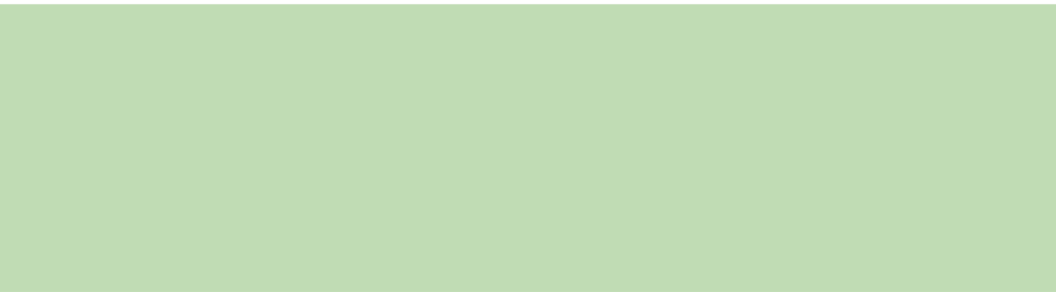
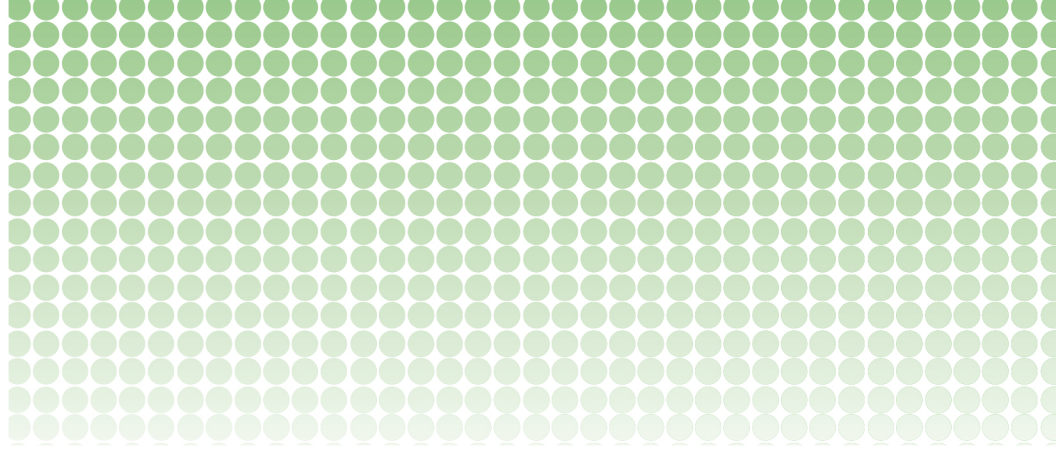
Order Information

Description	Quantity	Kit Code
Peel Plate YM Tests	100	4150-16

Peel Plate tests for *E. coli* and coliforms, coliform count, enterobacteriaceae, aerobic bacteria, and heterotrophic bacteria are also available. Visit Charm Sciences' website at www.charm.com to learn more.

Warranty

Charm Sciences, Inc. ("Charm") warrants each reagent product, including but not limited to test kits, to be free from defects in materials and workmanship and to be free from deviations from the specifications and descriptions of Charm's reagent products appearing in Charm's product literature, when stored under appropriate conditions and given normal, proper and intended usage, until the expiration of such reagent product's stated shelf life, or, if none is stated, for one year from the date of delivery of such reagent product to the end-user purchaser. THIS WARRANTY IS IN LIEU OF ALL OTHER WARRANTIES, WHETHER STATUTORY, EXPRESS, IMPLIED (INCLUDING WARRANTIES OF TITLE, NON-INFRINGEMENT, MERCHANTABILITY AND FITNESS FOR A PARTICULAR PURPOSE AND ALL WARRANTIES ARISING FROM COURSE OF DEALING OR USAGE OF TRADE). The warranty provided herein may not be altered except by express written agreement signed by an officer of Charm. Representations, oral or written, which are inconsistent with this warranty are not authorized and if given, should not be relied upon. In the event of a breach of the foregoing warranty, Charm's sole obligation shall be to replace any reagent product or part thereof that proves defective in materials or workmanship within the warranty period, provided the customer notifies Charm promptly of any such defect prior to the expiration of said warranty period. The exclusive remedy provided herein shall not be deemed to have failed of its essential purpose so long as Charm is willing to replace any nonconforming reagent product or part. Charm shall not be liable for consequential, incidental, special or any other indirect damages resulting from economic loss or property damages sustained by any customer from the use of its reagent products. Except for Charm's obligation set forth above to replace any reagent product that proves defective within the warranty period, Charm shall not be liable for any damages of any kind arising out of or caused by any incorrect or erroneous test results obtained while using any such reagent product, whether or not caused by a defect in such reagent product.



OM-658-005



WEBER SCIENTIFIC

2732 Kuser Road, Hamilton, NJ 08691-1806

800-328-8378 • info@weberscientific.com • weberscientific.com

© 2019 Charm Sciences, Inc. Charm and Peel Plate are registered trademarks of Charm Sciences. See www.charm.com/patents for a list of U.S. issued patents and pending, published U.S. and PCT applications.

OM-658-005 Mar-2019