

FREE Weber Scientific 2016-17 Catalog

Be certain to request your FREE copy of this essential 265-page Buyers Guide dedicated to Food, Beverage and Water Testing Equipment and Supplies.

It's easy to request your FREE copy ...

Call 800-328-8378 --8 a.m. to 5:30 p.m.
Eastern Time (or 609-584-7677)

Or go online at www.weberscientific.com

PPBR1016

Copyright © 2016 Weber Scientific



WEBER SCIENTIFIC

2732 KUSER ROAD, HAMILTON, NJ 08691-1806

800-328-8378

www.weberscientific.com



PRSRT STD
U.S. POSTAGE
PAID
U.S. Press
31601

New! Peel Plate[®] Microbial Tests Ready-to-use – Just add sample. No spreading device needed.

**Significant
Benefits over
Older Methods**



**FREE
Samples
Available**

Put together a Peel Plate Testing Package with Weber Scientific and save up to 25¢ per test!

Only by setting up a complete Testing Package will you receive exclusive discounted pricing on essential accessories.

See inside for all the details.



WEBER SCIENTIFIC

NEW! Peel Plate® Microbial Test

Large Volume Pricing is Available!

We'd be delighted to quote high volume pricing, over and above our already discounted price.

Look for this symbol and request a FREE sample!



Peel Plate EBHV Microbial Test

Peel Plate EB Microbial Test

- Reliable detection and quantification of hygienic indicator bacteria
- No preparation needed, just dilute sample/food into the quantifiable range and add sample and incubate
- Self-wicking; No spreading device needed
- Able to pick colonies for additional microbial isolation and identification
- Convenient plate stacking up to 20 plates high for improved air circulation
- No pH adjustment needed for acidified food products
- Robust performance with neutralizing buffers used in environmental surface samples
- Simple color indication of bacteria

**Just add sample/dilution.
No spreading device needed.**



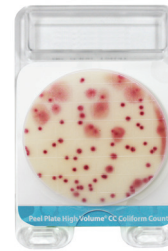
Peel Plate microbial tests are simplified culture methods for detecting micro-organisms. Tests are available for Aerobic Plate Count (AC), Coliform (CC), Coliform and E. coli (EC), Enterobacteriaceae (EB) and Yeast and Molds (Y&M). The APC, EC Plates are AOAC-RI and PMO-NCIMS approved. The YM is AOAC approved.

Each version of these tests contains non-selective or selective medium and follows conventional microbiologic procedures for time and temperature of incubation.

Selected Peel Plate microbial tests are available for sample volumes of either 1 mL or 5 mL (High Volume). High Volume (HV) microbial tests use a 5 mL sample volume. A 5 mL aliquot of a 1:5 dilution (or 5 mL on each of 2 plates of a 1:10 dilution) is added to the HV plate and is then incubated. 100 mm diameter is convenient for sample filters and 100 mL water samples or larger, including wine and beverages.

The tests are prepared media in a shallow dish with an adhesive top. Plates are ready-to-use and no spreading device is needed. Just add the sample to the middle and it wicks through the media and solidifies. Invert the test, stack multiple tests together (if appropriate) and incubate. The sample wicks rapidly to cover entire surface. An air gap between the plate and cover allows colony picking and determination of microbial morphology.

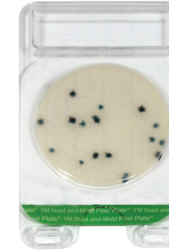
Peel plates are used in dairy products, ground meats, other foods, contact surfaces and water. Colony development is easily quantified by color.



Peel Plate CC Microbial Test



Peel Plate AC Microbial Test



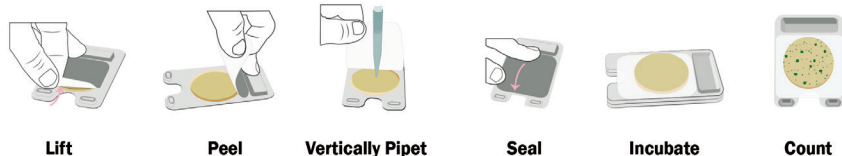
Peel Plate YM Microbial Test



Peel Plate EC Microbial Test

Item No.	Mfr. Item No.	Description	Qty	Qty Break	Your Cost
4150-03	PP-AC-100K	Aerobic Plate Count Peel Plate	Pack/100 (2 x 50)	1-4 Mult of 5 Mult of 10	75.00 70.00 67.50
4150-10	PP-EC-100K	Coliform and E. Coli Peel Plate	Pack/100 (2 x 50)	1-4 Mult of 5 Mult of 10	95.00 90.00 85.00
4150-11	PP-ECHV-25K	Coliform and E. Coli Peel Plate High Volume	Pack 25	each	38.75
4150-30	PP-ECHV-100K	Coliform and E. Coli Peel Plate High Volume	Pack/100 (4 x 25)	each	150.00
4150-12	PP-CC-100K	Coliform Peel Plate	Pack/100 (2 x 50)	1-4 Mult of 5 Mult of 10	75.00 70.00 67.50
4150-13	PP-CCHV-25K	Coliform Peel Plate High Volume	Pack/25	each	32.25
4150-14	PP-CCHV-100K	Coliform Peel Plate High Volume	Pack/100 (4 x 25)	each	125.00
4150-15	PP-CCS03-100K	Coliform Peel Plate includes Bisulfate for cultured products	Pack/100 (2 x 50)	1-4 Mult of 5 Mult of 10	75.00 70.00 67.50
4150-16	PP-YM-100K	Yeast and Mold Peel Plate	Pack/100 (2 x 50)	1-4 Mult of 5 Mult of 10	110.00 100.00 95.00
4150-21	BUF-NAS03	Sodium Bisulfate Concentrate	30 mL	each	20.00
4150-17	PP-YMHV-25K	Yeast and Mold Peel Plate High Volume	Pack/25	each	38.75
4150-18	PP-YMHV-100K	Yeast and Mold Peel Plate High Volume	Pack/100 (4 x 25)	each	150.00
4150-22	PP-EB-100K	Enterobacteriaceae Peel Plate	Pack/100 (2 x 50)	1-9 10+	95.00 85.50
4150-50	PP-COLONY COUNTER	Colony Counter- Including wireless touch/keyboard (bar code and printer optional accessories)	Each		7,495.00

Simple Procedure



Put together a Peel Plate Testing Package with Weber Scientific and save up to 25¢ per test!

Contact your Account Manager (identified by their initials on your mailing label).

Remember these special discounts are only available to Peel Plate test customers.



Sharon Wilson
Senior National Accounts Manager
swilson@weberscientific.com

Testing Package Discounts up to **25% Off** on

The bottles are still color-coded! The lettering on the side of each bottle is now color-coded for easy identification. There are no functional changes to the product. It is the same Weber Scientific Dilution Bottle you've always used.



Weber DB™ Sterilized Pre-filled Dilution Bottles

Tamper evident sterility strip is integrated as part of the cap. It is much easier to open and use. Never hassle with shrink bands again!

Every bottle is pre-filled to either 99 or 90 mL ±2 mL, buffered to pH 7.2 ±0.2, has an overall capacity of 150 mL, and is recyclable.

Two formulations are available:

Butterfield's Buffer for Foods and Dairy Products (APHA, FDA, AOAC or USP methods)
Contains purified water, monobasic potassium phosphate, and sodium hydroxide for pH adjustment.

Phosphate Buffer for Water/Wastewater and Dairy Products (APHA or EPA methods)
Contains magnesium chloride, monobasic potassium phosphate, and sodium hydroxide for pH adjustment.

Catalog Number	Formulation	Fill, mL	Id. Print Color	Qty	Qty Break	Regular Cost per case	Package Discount	Your Cost
3127-14	Butterfield's	99	black	} case/72	1-11	43.27	25%	32.45
3127-44	Butterfield's	90	green		12-24	37.82	25%	28.37
3127-29	Phosphate Buffer	99	red		25+	35.66	25%	26.75
3127-59	Phosphate Buffer	90	blue					

Would you like to evaluate a free sample?



A free four-bottle sterilized Weber DB mini-case is available! Please let us know which DB product you would like to evaluate when making your request.



Natural is the new green. We've switched to a natural polyethylene cap for our Weber DB™ Dilution Bottles. This eliminates the need for the dyes we used to use.

Easier to store, Greener packaging
60% smaller footprint and 3 times less corrugated waste than the competition.

Put together a Peel Plate Testing Package with Weber Scientific and save up to 25¢ per test!

Contact your Account Manager (identified by their initials on your mailing label).

Remember these special discounts are only available to Peel Plate test customers.



MaryBeth Karczynski
Key Account Manager
mkarczynski@weberscientific.com

Testing Package Discounts up to **20% Off** on Swabs

Solar Cult® Sponge Handle Sampling System (Solar Biologicals)

Sample hard-to-reach surfaces without directly holding a sponge

Eliminates the need for sterile gloves. Sterile pre-moistened cellulose sponge with quick release handle is designed for sampling for microbiological contamination on almost any surface. It is a convenient ready to use product, designed to eliminate the costly, time-consuming steps of diluent preparation, sterilization and application to sampling devices. Packaged in an easy-tear foil pouch. Comes with a sterile twirl-tie bag to make this an all-inclusive sampling system. Simply remove the handle (sponge attached), collect sample, return to twirl-tie bag, release sponge into bag, twirl bag closed and send to lab for analysis. 2-year shelf life from date of manufacture.



Item No.	Mfr Item No.	Description	Qty	List Price	% Off List	Qty Break	Regular Price	Package Discount	Your Cost
3060-98	SH-10NB	10 mL Neutralizing Buffer	pack/100	250.00	38	1	155.00	10%	139.50
					43	2+	142.50	10%	128.25
3060-95	SH-10LB	10 mL Lethen Broth	pack/100	250.00	38	1	155.00	10%	139.50
					43	2+	142.50	10%	128.25
3060-97	SH-10DE	10 mL DE Neutralizing Buffer	pack/100	250.00	38	1	155.00	10%	139.50
					43	2+	142.50	10%	128.25



Q-Swab™ Sample Collection Devices (Hygiena)

Identical to 3M Quick Swab at enormous savings!

A sterile swab at the end of a 4 1/4" shaft comes attached to a cap containing a reservoir of 1 mL of transport media, and is enclosed in a clear plastic sheath. Using patented snap-valve technology, you simply swab the surface to be tested, place the swab back into the holder, snap the integrated valve, squeeze the bulb to wash the liquid media over the swab, and return the swab to the sheath for transport to the laboratory.

You can then pour the 1 mL aliquot into a dish or tube for culturing.

Item No.	Medium	Qty Break	Your Cost
3663-03	Buffered Peptone water	1	214.58
		2+	193.13
3663-15	Lethen universal neutralizing medium	1	218.88
		2+	196.99

ESK® Sterile Swab System (Puritan)

Available in 4 or 10 mL fill

For all environmental surface sampling.

- Easy edge-peel packaging
- Quick-turn leak-resistant cap
- High-quality Puritan polyester tipped swab – 0.7" x 0.2" (5 mm x 17 mm)
- Swab is securely attached to cap
- 3.25" (83 mm) swab length – 4" (103 mm) overall length
- Polystyrene handle



Item No.	Mfr Item No.	Description	Volume	Qty	List Price	% Off List	Qty Break	Reg. Price	Package Discount	Your Cost
3059-01	25-83004-PD NB	Neutralizing Buffer	4 ml	pack/50	79.31	29	1-5	56.31	20%	45.05
						40	Multi. of 6	47.59	20%	38.07
3059-02	25-83010-PD NB		10 ml	pack/50	80.31	29	1-5	57.02	20%	45.61
						40	Multi. of 6	48.19	20%	38.55
3059-03	25-83004-PD BS	Butterfield's Solution	4 ml	pack/50	80.42	29	1-5	57.10	20%	45.68
						40	Multi. of 6	48.25	20%	38.60
3059-04	25-83010-PD BS		10 ml	pack/50	83.73	29	1-5	59.45	20%	47.56
						40	Multi. of 6	50.24	20%	40.19
3059-05	25-83004-PD LB	Lethen Broth	4 ml	pack/50	75.77	29	1-5	53.80	20%	43.04
						40	Multi. of 6	45.46	20%	36.37
3059-06	25-83010-PD LB		10 ml	pack/50	88.70	29	1-5	62.98	20%	50.38
						40	Multi. of 6	53.22	20%	42.58
3059-07	25-83004-PD BPW	Buffered Peptone Water	4 ml	pack/50	78.86	29	1-5	55.99	20%	44.79
						40	Multi. of 6	47.32	20%	37.86
3059-08	25-83010-PD BPW		10 ml	pack/50	79.55	29	1-5	56.48	20%	45.18
						40	Multi. of 6	47.73	20%	38.18

Put together a Peel Plate Testing Package with Weber Scientific and save up to 25¢ per test!

Contact your Account Manager (identified by their initials on your mailing label).

Remember these special discounts are only available to Peel Plate test customers.



Nancy Silvester
Account Manager
nsilvester@weberscientific.com

Everyday Discounts on Pipettors

eLINE® Electronic Pipettor (Sartorius – formerly Biohit)

Superb ergonomics to prevent Repetitive Strain Injury

Fully electronic operation guarantees user-independent results

- Autoclavable lower part
- 9.5" / 241 mm length
- Fits most major pipettor tips
- 2-year warranty
- Single channel
- IVD/CE certification
- Comprehensive range of pipetting modes



Item No.	Color Code (to match tips)	Mfr Item No.	Test Volumes (µl)	Inaccuracy (%)	Imprecision (%)
3185-80	Orange	730061	300 / 150 / 30	0.40 / 0.60 / 1.50	0.15 / 0.20 / 0.80
3185-82	Blue	730081	1000 / 500 / 100	0.40 / 0.60 / 1.50	0.15 / 0.20 / 0.80
3185-84	Green	730101	5000 / 2500 / 500	0.50 / 0.80 / 1.00	0.15 / 0.20 / 0.40

Item No.	Description	List Price	% Off List	Qty Break	Your Cost
3185-80	10-300 µL with charging adaptor	760.00	20	1	608.00
			30	2+	532.00
3185-82	50-1000 µL with charging adaptor	760.00	20	1	608.00
			30	2+	532.00
3185-84	100-5000 µL with charging adaptor	760.00	25	1	570.00
			35	2+	494.00



Proline® Plus Mechanical Pipettors (Sartorius – formerly Biohit)

Highest accuracy and precision for today's demanding laboratories

Both adjustable and fixed volume models

- Autoclavable
- User calibratable
- Wide range of sizes – up to 10 mL on fixed volume model!
- Compatible with a wide range of tips
- Ergonomic design with light pipetting forces, comfortable handle and finger support for reduced risk of strain injuries
- For both right or left handed users
- Easy-to-read volumes
- Single channel
- IVD/CD certification
- 2 year warranty

Adjustable volume pipettor

- Easy to read display, easy volume change and quick turn
- Increased safety with volume lock preventing accidental volume changes while pipetting

Item No.	List Price	% Off List	Qty Break	Your Cost
3185-15	245.00	30	1	171.50
		35	2+	159.25
3185-16	245.00	30	1	171.50
		35	2+	159.25
3185-18	245.00	30	1	171.50
		35	2+	159.25
3185-22	245.00	30	1	171.50
		35	2+	159.25
3185-24	184.00	25	1	138.00
		30	2+	128.80
3185-26	184.00	25	1	138.00
		30	2+	128.80
3185-28	184.00	25	1	138.00
		30	2+	128.80
3185-30	184.00	25	1	138.00
		30	2+	128.80
3185-32	184.00	25	1	138.00
		30	2+	128.80
3185-34	184.00	25	1	138.00
		30	2+	128.80
3185-36	184.00	25	1	138.00
		30	2+	128.80

Item No.	Color Code (to match tips)	Mfr Item No.	Volume Range (µl)	Increment (µl)	Test Volumes (µl)	Inaccuracy (%)	Imprecision (%)
3185-15	Yellow or orange	728050	10 - 100	0.10	100 / 50 / 10	0.80 / 1.00 / 2.00	0.15 / 0.40 / 1.00
3185-16	Yellow or orange	728060	20 - 200	0.20	200 / 100 / 20	0.60 / 0.80 / 2.00	0.15 / 0.30 / 0.80
3185-18	Blue	728070	100 - 1000	1.00	1000 / 500 / 100	0.60 / 0.60 / 1.00	0.20 / 0.20 / 0.40
3185-22	Green	728080	500 - 5000	10.0	5000 / 2500 / 500	0.50 / 0.60 / 2.00	0.20 / 0.30 / 0.60
3185-24	Gray	728515	5	-	5	1.30	1.20
3185-26	Gray	728520	10	-	10	0.80	0.80
3185-28	Blue or Aqua	728567	500	-	500	0.30	0.20
3185-30	Blue or Aqua	728570	1000	-	1000	0.30	0.20
3185-32	Green	728575	2000	-	2000	0.30	0.15
3185-34	Green	728580	5000	-	5000	0.30	0.15
3185-36	Red	728590	10 ml	-	10000	0.60	0.20

LARGE VOLUME PRICING IS AVAILABLE!

We'd be delighted to quote high volume pricing, over and above our already discounted price.



Sharon Wilson
Senior National
Accounts Manager
swilson@weberscientific.com



Nancy Silvester
Account Manager
nsilvester@weberscientific.com



MaryBeth Karczynski
Key Account Manager
mkarczynski@weberscientific.com



Phil Coombs
Key Account Manager
pcoombs@weberscientific.com

Testing Package Discounts of **15% Off** on Pipettor Tips

Universal Fit Tips for Micro-Pipettors (Weber)

Engineered for a wide variety of pipettors. Your lab can now standardize on one brand of tips! Rack packs are autoclavable. Natural polypropylene



Item No.	Fits Pipettor	Packaging	Graduated	Qty Break	Regular Price	Package Discount	Your Cost
3184-25	1-200 µl	1000 bulk pack, not sterile	yes	1-9	14.50	15%	12.33
				Multi. of 10	10.95	15%	9.31
3184-27	1-200 µl	960 rack pack, 10 x 96, not sterile	yes	1-4	27.67	15%	23.52
				Multi. of 5	24.94	15%	21.20
3184-30	1-200 µl	960 sterile rack pack, 10 x 96	yes	1-4	30.65	15%	26.05
				Multi. of 5	27.71	15%	23.55
3184-34	201-1000 µl	1000 bulk pack, not sterile	no	1-9	16.40	15%	13.94
				Multi. of 10	14.70	15%	12.50
3184-36	201-1000 µl	1000 rack pack, 10 x 100, not sterile	no	1-4	35.63	15%	30.29
				Multi. of 5	27.00	15%	22.95
3094-45	201-1000 µl	1000 sterile rack pack, 10 x 100	no	1-4	37.12	15%	31.55
				Multi. of 5	31.25	15%	26.56
				Multi. of 25	26.64	15%	22.64

Wide Tip Pipet Tips (Weber)

Larger tip opening and precision pipetting

Accurate tips are compatible with the most popular pipettors. Certified as RNase, DNase, and endotoxin free. Flexible walls and a series of internal sealing rings ensure a secure and less force to load and eject. 1000 µl tip fits the 3M Electronic Pipettor. Natural polypropylene.

Item No.	Fits Pipettor	Packaging	List Price	% Off List	Qty Break	Regular Price	Package Discount	Your Cost
3184-70	200 µL	1000 bulk pack, not sterile	17.95	30	1-19	12.57	15%	10.68
					Multiples of 20	11.31	15%	9.61
3184-71	200 µL	960 rack pack, 10 X 96, not sterile	38.10	30	1-4	26.67	15%	22.67
					Multiples of 5	24.00	15%	20.40
3184-72	200 µL	960 rack pack, 10 X 96, sterile	39.95	30	1-4	27.97	15%	23.77
					Multiples of 5	25.17	15%	21.39
3184-74	1000 µL	1000 bulk pack, not sterile	23.10	30	1-4	16.17	15%	13.74
					Multiples of 5	14.55	15%	12.37
3184-75	1000 µL	960 rack pack, 10 X 96, not sterile	48.65	30	1-4	34.06	15%	28.95
					Multiples of 5	30.65	15%	26.05
3184-76	1000 µL	960 rack pack, 10 X 96, sterile	55.17	30	1-4	38.62	15%	32.83
					Multiples of 5	34.76	15%	29.55

Optifit™ Tips for Pipettor (Sartorius-Biohit)

Tips fit Biohit, 3M® Electronic and most other pipet brands

Item No.	Mfr Item No.	Description	Color Code	Volume Range	Length	Qty	Qty Break	Your Cost
3185-68	780305	Pre-Sterilized, Single Tray	Green	100-5000 µl	150 mm	10 x 50 Tips	1-4	125.30
						5+	107.40	

ORDERING INFORMATION



How to Order



PHONE:
800-328-8378

8 a.m. to 5:30 p.m. EST
(or 609-584-7677)



FAX:
609-584-8388



MAIL:
WEBER SCIENTIFIC

2732 Kuser Road
Hamilton, NJ 08691-1806



ONLINE:
weberscientific.com

E-MAIL:
info@weberscientific.com

✓ No Minimum Order.

✓ In-Stock for Immediate Shipment.

✓ Order Risk-Free with Our No-Nonsense Satisfaction Guarantee.

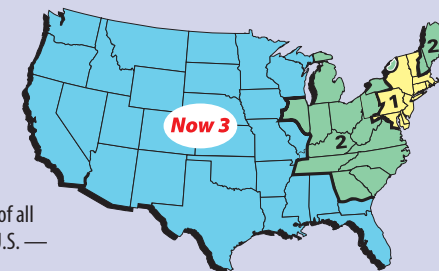
If you are not totally satisfied, call our customer service department within 30 days for replacement or return authorization.



FREE samples are available. What better way to evaluate a product than a free sample? Simply request your desired item by Weber item number and mention that you want a sample.

Receive Free Freight Upgrades When You Order From Weber Scientific!

When you order from Weber Scientific we will route it so that all (or part*) of your order arrives at your facility within 1, 2 but never more than 3 business days. Any upgrade in the level of service over basic UPS or FedEx ground service will be done at **our expense - not yours!**



Combined with our Same Day Shipping Pledge, this expedited routing program will insure prompt delivery of all or part of your order to any location in the continental U.S. — all at no extra cost.

Here is how the 1-2-3 Day Delivery program works:

Place your order by 3:00 PM (Eastern Time) and your order will ship that very same afternoon. Based on a nationwide delivery schedule (see map) your order will be routed via basic ground service if delivery is scheduled at 3 business days or less. If the delivery schedule indicates more than 3 business days, we will upgrade one or more cases to 3 Day Service at no extra charge to you. You pay only for basic ground service on any upgrades.

*Some exceptions apply.

Order 800-328-8378

Visit weberscientific.com

 WEBER SCIENTIFIC